

STANDARD FEATURES

SPA MODEL	A857B
Seating Capacity	6
Acrylic	Standard
Dimensions (W x L x H)	93" x 93" x 39"
Dry Weight (Lbs.)	900 (408 kg)
Filled Weight (Lbs.)	4,648 (2,108 kg)
Water Capacity (Gal.)	450 (1,703 L)
High Performance Pump	3x 5.0 HP
Pump(s) Voltage	240V
True Blue Vacuum Safety Break	Yes
Total Stainless Steel Jets:	57
Euro Jets (EW)	17
Neck Euro Jet (EWD)	6
Maxi Flow Jets (MFW)	12
Micro Flow Jets (mfw)	15
Micro Swirl (msw)	4
Ozone Jet (OZ)	1
Tornado (T)	1
Whirlpool (W)	1
Exclusive Cal Quest 2000 Ozonator™	Yes
Waterfall, Cascade (OPT-329)	Yes
Pillows (Logo)	3
2" Plumbing	Yes
Easy-Flo Air Venturi Valve	3
Gate Valve(s)	Yes
Comfort Diverter 1" Valve	1
Comfort Diverter 2" Valve	2
Exclusive Bio-Clean Filter™ Feeder w/ WeirGate	100 sq. ft.
Spa Light (12V)	Yes
Exclusive Automatic Winterizing System	Yes
Equipment & Electrical	6300 Equipment with Mini Dash
Exclusive XL Heat Exchanger™ (5.5Kw)	Yes
Low Profile Drain (LFPD)	Yes
Wall Drain	Yes
Pressure Treated Cabinet Frame	Yes
Cal Preferred Cabinet Panel	Yes
Cover, Standard 5" Taper to 3"	Yes
Standard Bottom Tray	Yes
UL , CEC and VGB Approved	Yes
Warranty (Structural)	5 Years
Warranty (Finish)	5 Years
Warranty (Parts)	5 Years
Warranty (Labor)	5 Years



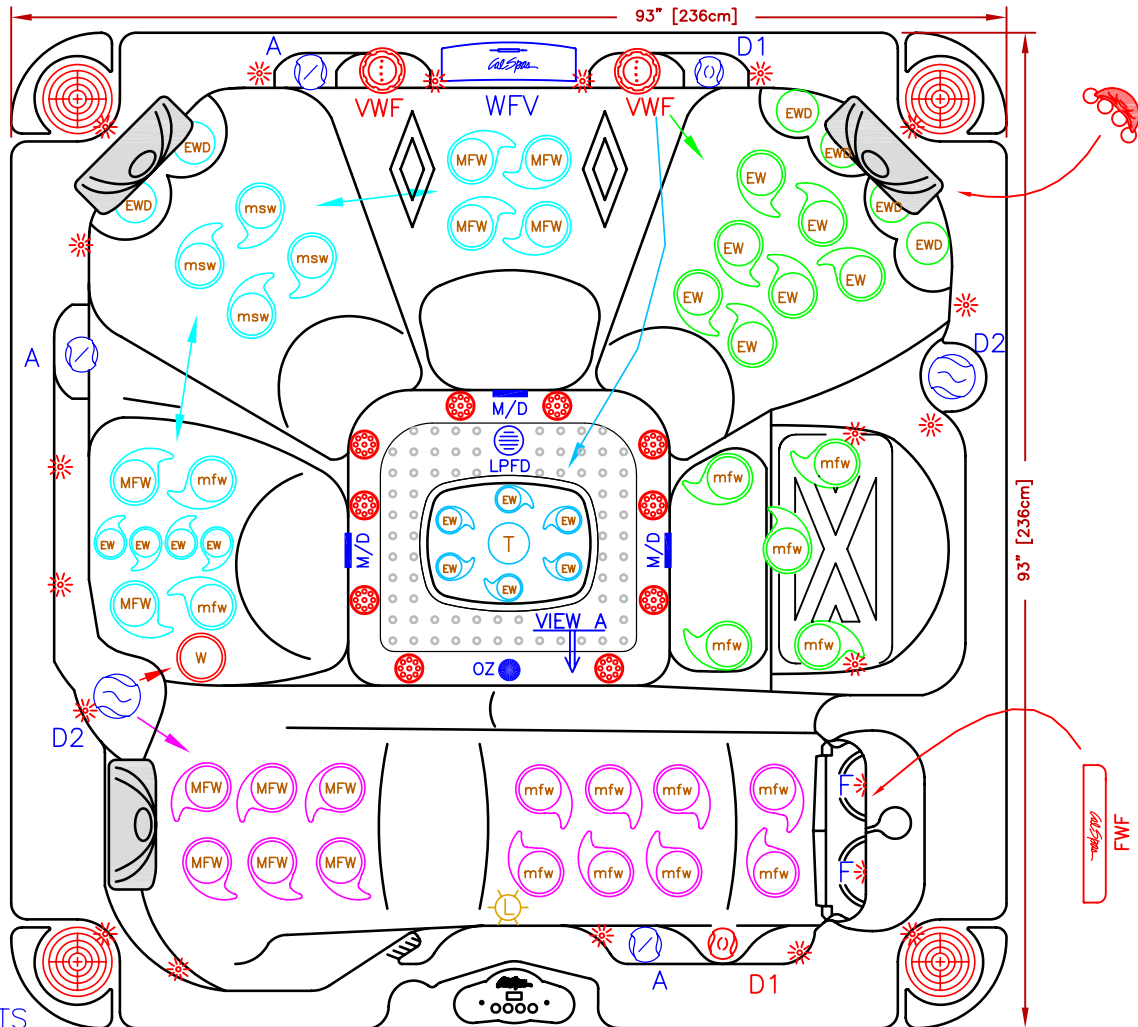
AVAILABLE OPTIONS

CABINET (continued)	
4 Corner Side Cabinet Lighting (Cal Preferred cabinets only)	Opt-863-4
2 Corner Under Cabinet Lighting (Cal Preferred cabinets only)	Opt-864-2
4 Corner Under Cabinet Lighting (Cal Preferred cabinets only)	Opt-864-4
2 Corner Illumipanel Cabinet Lighting (Cal Preferred cabinets only)	Opt-866-2
4 Corner Illumipanel Cabinet Lighting (Cal Preferred cabinets only)	Opt-866-4
Cal Choice Cabinet Panels (N/A with Top rail)	OPT-972
Cal Design Cabinet Panel (N/A with Top rail)	Opt-977-D
Cal Stone Cabinet (Gold / Platinum)	Opt-955
Cal Wicker Cabinet (Smoke) (N/A with Top rail)	Opt-971
PLUMBING	
Stainless Steel Cobalt Blue Jets	OPT417-BLU-2
Waterfall, Vertical (VWF)	Opt-331
Waterfall, Vertical (VWF) (x2)	Opt-331-2
Waterfall, Filter (FWF)	Opt-334
Cabinet Accessible Drain Valve	Opt-129
Quad Blaster (4 Jets with Valve)	OPT344
Turbo Air Injection (Adds 10 Air Jets)	Opt-800A
Supercharged Jets (will eliminate air valves)	Opt-800
EQUIPMENT	
Exclusive Pure XL™ System (XI Heater, Spa Cal Filtration, UV Light)	OPT-190-1
Exclusive Cal-Clarity™ Bromine Generator	Opt-911
Exclusive 24 Hr + Filtration™	OPT-112
Exclusive Spa Cal Filtration™	OPT-110
Spa LED light	Opt-860
LED Perimeter / Waterline Lighting	Opt-860T
LED Underwater Lighting	Opt-865
Stereo System iPod Station Only with Four (4) 6" Speakers	Opt-S101
Stereo System CD player, MP3 with Four (4) 6" Speakers	Opt-S105
Marine Stereo System CD player, MP3 with Four (4) 6" Speakers	Opt-S115
Freestanding 32" Outdoor LCD TV with Swivel & Remote	ELE09306000
*iSound™ Remote iPod Dock with Portable Speaker	ELE09307000
Subwoofer (N/A on 2 speakers system)	Opt-196
RECOMMENDED ACCESSORIES	
Rock-It Cover Lift (Undermount)	ACC01601020
Comfort Steps Mist(Mi), Smoke(S) or Mahogany(M)	ACC0HS2()
Cantilever Umbrella with Cross Base Rust(R), Navy(N) or Cream()	ACC01800600()
Cantilever Umbrella with Flat Base Rust(R), Navy(N) or Cream()	ACC01800610()
Starter Chemical Kit (Bromine or Chlorine)	CHE07000290-B CHE07000295-C

AVAILABLE OPTIONS

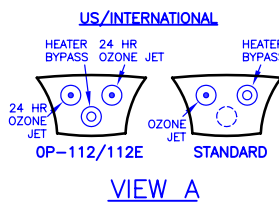
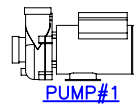
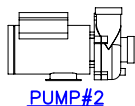
SHELL	
Cover, Deluxe 5" Taper to 3"	Opt-133
Extended Adjustable Cover Straps (up to 391/2" Cabinet)	ACC01800700
CABINET	
ABS Bottom Tray (Adds approx. 2-3" in height)(7' or 8' only)	OPT-247
Top Rail (N/A on Cal Wicker & Cal Choice Cabinets ; Adds approx 3" in width)	OPT-991
Full Foam Insulation	Opt-600
Thermo-Layer Cabinet	Opt-829
2 Corner Side Cabinet Lighting (Cal Preferred cabinets only)	Opt-863-2

LINE	AVALON
MODEL	A857L
NUM	



57 JETS LEGEND

QTY.	SYMB.	DESCRIPTION
12	(MFW)	MAXI FLOW (PLU21703630)
15	(mfw)	MICRO FLOW (PLU21703631)
4	(msw)	MICRO SWIRL (PLU21703632)
17	(EW)	EURO JET (PLU21703621)
6	(EWD)	NECK EURO JET (PLU21703643)
1	(T)	TORNADO (PLU21703629)
1	(W)	WHIRLPOOL (PLU21703609)
1	(OZ)	OZONE
3	(A)	AIR VENTURI
1	(D1)	1" DIVERTER VALVE
2	(D2)	2" DIVERTER VALVE
1	(L)	LIGHT
1	(W/FV)	WATERFALL W/VALVE
3	(M/D)	MAIN DRAIN
2	(F)	FILTER (100 SQ.FT.)
1	(LPFD)	LOW PROFILE FLOOR DRAIN



NOTE: AMOUNT OF LEDS INCREASES WHEN A STEREO SYSTEM IS ADDED TO A TOP LED CONFIGURATION

SCALE: N/A

SPECIFICATIONS	
DIMENSIONS	93" X 93" X 39 1/2" [236cm X 236cm X 100cm]
WATER CAP.	450 GAL [1,703 L]
APP. WEIGHT	900 LBS [408 Kg]



TITLE 2010 SPA LINE AVALON SERIES A857L	
DWG NO.	DWG BY A. MORATAYA
DATE 11/17/09	REVISED

- OPTIONS**
- ⊙ = STEREO SYSTEM (INCLUDES 4 SPEAKERS)
 - * = TOP LED CONFIGURATION
 - ⊕ = VERTICAL WATERFALL (VWF) (2)
 - ⊗ = QUAD BLASTER (4 MNW - PLU21703628)
 - ⊙ = AIR INJECTORS

NOTE:
DUE TO OUR CONTINUOUS IMPROVEMENT PROGRAM, ALL MODELS AND SPECIFICATIONS ARE SUBJECT TO CHANGE WITHOUT NOTICE.