

STANDARD FEATURES

| Spa Model | C850L |
|---|--------------------------------------|
| Seating Capacity | 6 |
| Acrylic | Standard |
| Dimensions (W x L x H) | 93" x 93" x 39" |
| Dry Weight (Lbs.) | 900 (408 kg) |
| Filled Weight (Lbs.) | 4,648 (2,108 kg) |
| Water Capacity (Gal.) | 450 (1,703 L) |
| High Performance Pump | 2x 6.0 HP |
| Pump(s) Voltage | 240V |
| True Blue Vacuum Safety Break | Yes |
| Exclusive Safety Suction System™ | Yes |
| Total Stainless Steel Jets: | 50 |
| Euro Jets (EW) | 2 |
| Micro Flow Jets (mfw) | 4 |
| Micro Swirl (msw) | 4 |
| Neck Blasters (MFRW) | 3 |
| Neck Jets (MNW) | 4 |
| Ozone Jet (OZ) | 1 |
| Polystorm Accupressure - 6 spoke (PSA) | 4 |
| Storm (CXW) | 20 |
| Storm (MJW) | 2 |
| Sure Flow (SFW) | 4 |
| Tornado (T) | 1 |
| Whirlpool (W) | 1 |
| Exclusive Cal Quest 2000 Ozonator™ | Yes |
| Waterfall, Filter (OPT-334) | Yes |
| Pillows | 5 |
| 2" Plumbing | Yes |
| Easy-Flo Air Venturi Valve | 4 |
| Gate Valve(s) | Yes |
| Comfort Diverter 1" Valve | 3 |
| Comfort Diverter 2" Valve | 2 |
| Exclusive Bio-Clean Filter™ Feeder with Weir Gate | 100 sq. ft. |
| Spa Light (12V) | Yes |
| Exclusive Automatic Winterizing System | Yes |
| Exclusive "Green Pack" 40/50 Amp Equipment (Only Available with 2 pump system) (N/A with XL Option in Classic Series) | Yes |
| Equipment & Electrical | 6200 Equipment with Mini Dash |
| Exclusive XL Heat Exchanger™ (5.5Kw) | Yes |
| Floor Drain | Yes |
| Wall Drain | Yes |
| Pressure Treated Cabinet Frame | Yes |
| Cal Preferred Cabinet Panel | Cal Design |
| Cover, Standard 5" Taper to 3" | Yes |
| Standard Bottom Tray | Yes |
| UL , CEC and VGB Approved | Yes |
| Warranty (Structural) | 5 Years |
| Warranty (Finish) | 5 Years |
| Warranty (Parts) | 5 Years |
| Warranty (Labor) | 5 Years |

AVAILABLE OPTIONS

| SHELL | |
|---|-------------|
| Cover, Deluxe 5" Taper to 3" | Opt-133 |
| Extended Adjustable Cover Straps (up to 39 1/2" Cabinet) | ACC01800700 |
| CABINET | |
| ABS Bottom Tray (Adds approx. 2-3" in height)(7' or 8' only) | OPT-247 |
| Top Rail (N/A on Cal Wicker & Cal Choice Cabinets ; Adds approx 3" in width) | OPT-991 |
| Full Foam Insulation | Opt-600 |
| Thermo-Layer Cabinet | Opt-829 |
| 2 Corner Side Cabinet Lighting (Cal Preferred cabinets only) | Opt-863-2 |
| 4 Corner Side Cabinet Lighting (Cal Preferred cabinets only) | Opt-863-4 |
| 2 Corner Under Cabinet Lighting (Cal Preferred cabinets only) | Opt-864-2 |
| 4 Corner Under Cabinet Lighting (Cal Preferred cabinets only) | Opt-864-4 |
| 2 Corner Illumipanel Cabinet Lighting (Cal Preferred cabinets only) | Opt-866-2 |
| 4 Corner Illumipanel Cabinet Lighting (Cal Preferred cabinets only) | Opt-866-4 |
| Cal Choice Cabinet Panels (N/A with Top rail) | OPT-972 |
| Cal Stone Cabinet (Gold / Platinum) | Opt-955 |
| Cal Wicker Cabinet (Smoke) (N/A with Top rail) | Opt-971 |



AVAILABLE OPTIONS

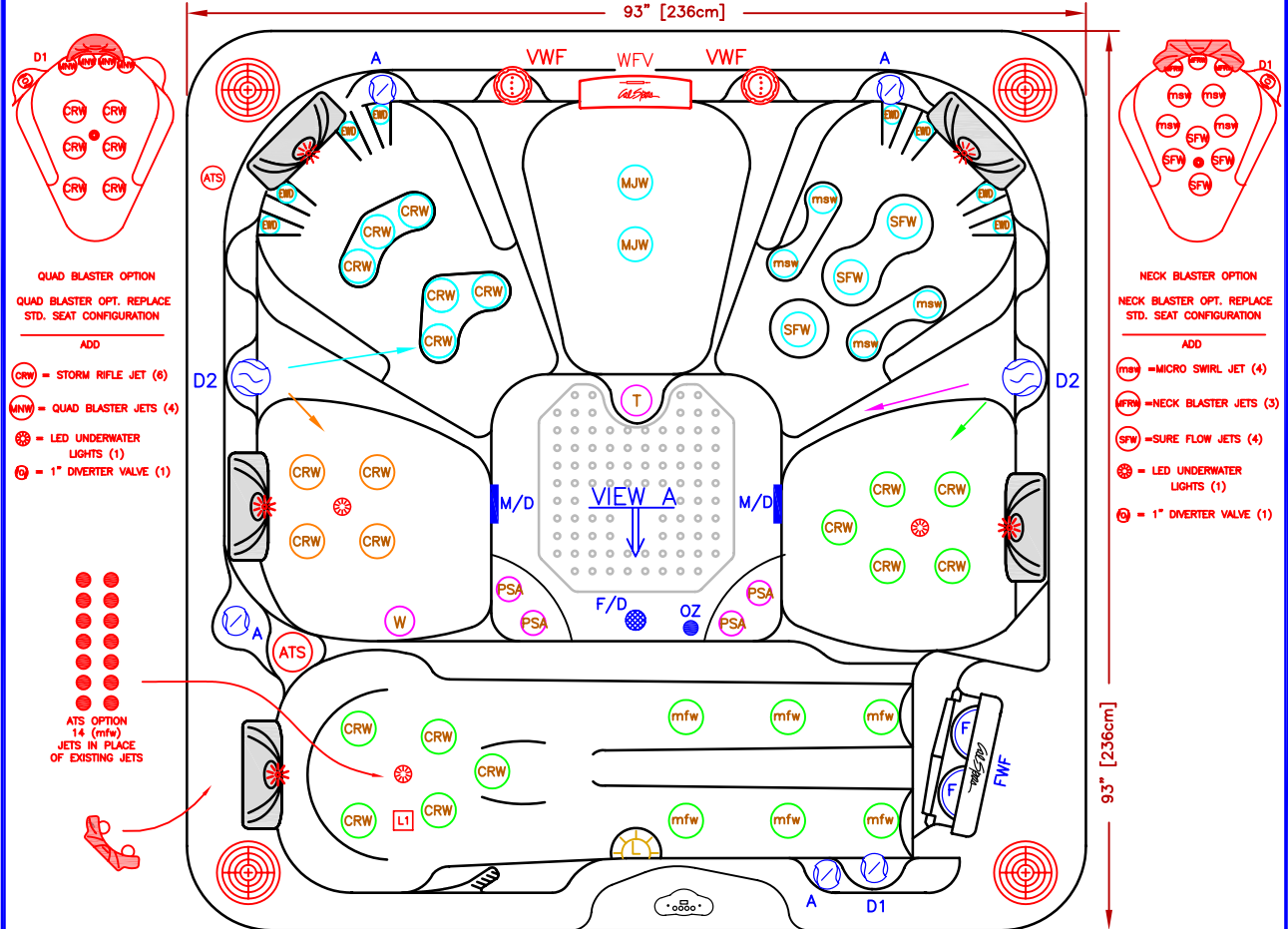
| PLUMBING | |
|--|--------------------------------|
| Stainless Steel Cobalt Blue Jets | OPT417-BLU-2 |
| Waterfall, Cascade (WFV) | Opt-329 |
| Waterfall, Vertical (VWF) | Opt-331 |
| Waterfall, Vertical (VWF) (x2) | Opt-331-2 |
| Cabinet Accessible Drain Valve | Opt-129 |
| Quad Blaster (4 Jets with Valve) | OPT344 |
| Neck Blasters (3 Jets with Valve) | OPT341 |
| Neck Jets (2 Jets) | Opt-119 |
| Turbo Air Injection (Adds 10 Air Jets) | Opt-800A |
| Supercharged Jets (will eliminate air valves) | Opt-800 |
| Supercharged Jets / Turbo Air (Adds 10 Air Jets) (will eliminate air valves) | Opt-800C |
| EQUIPMENT | |
| Exclusive Pure XL™ System (XI Heater, Spa Cal Filtration, UV Light) | OPT-190-1 |
| Exclusive Cal-Clarity™ Bromine Generator | Opt-911 |
| Exclusive 24 Hr + Filtration™ | OPT-112 |
| Exclusive Spa Cal Filtration™ | OPT-110 |
| Exclusive Booster Pump 2 x Dually 6HP | OPT-139G |
| Exclusive Adjustable Therapy System (Therapy Seat) (S1) | Opt-109T |
| Spa LED light | Opt-860 |
| LED Perimeter / Waterline Lighting | Opt-860P |
| LED Underwater Lighting | Opt-865 |
| Stereo System iPod Station Only with Four (4) 6" Speakers | Opt-S101 |
| Stereo System CD player, MP3 with Four (4) 6" Speakers | Opt-S105 |
| Marine Stereo System CD player, MP3 with Four (4) 6" Speakers | Opt-S115 |
| Freestanding 32" Outdoor LCD TV with Swivel & Remote | ELE09306000 |
| "iSound" Remote iPod Dock with Portable Speaker | ELE09307000 |
| Subwoofer (N/A on 2 speakers system) | Opt-196 |
| Wireless Spa Monitor (Requires XL Option) | ELE09300600 |
| Dolphin Waterproof Floating RF Remote Control (Requires XL Option) | ELE09300800 |
| RECOMMENDED ACCESSORIES | |
| Rock-It Cover Lift (Undermount) | ACC01601020 |
| Comfort Steps Mist(Mi), Smoke(S) or Mahogany(M) | ACCOHS2() |
| Cantilever Umbrella with Cross Base Rust(R), Navy(N) or Cream() | ACC01800600() |
| Cantilever Umbrella with Flat Base Rust(R), Navy(N) or Cream() | ACC01800610() |
| Starter Chemical Kit (Bromine or Chlorine) | CHE07000290-B CHE07000295-C |

XL OPTION

C850L-XL

- 1 Water Fall
- Two (2) 1" Comfort Diverter Valve with LED
- Two (2) 2" Comfort Diverter Valve with LED
- 4 Easy-Flo Air Venturi with LED
- 3 Pillows with LED Logo
- 9800 Equipment with with Sound
- LED Lighting Opt-860P

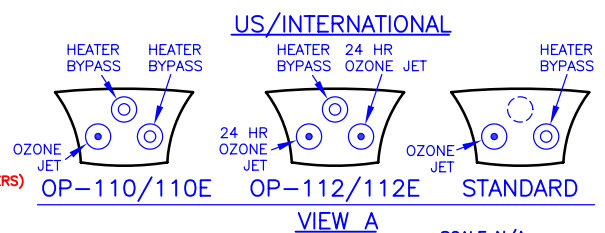
| | |
|-------|---------|
| LINE | CLASSIC |
| MODEL | C850L |
| NUM | |



50 JETS LEGEND

| QTY. | SYMB. | DESCRIPTION | |
|------|-------|---------------------|---------------|
| 8 | (EWD) | NECK EURO JET | (PLU21703643) |
| 4 | (PSA) | POWER STRM ACPR | (PLU21703668) |
| 2 | (MJW) | STORM JET | (PLU21703625) |
| 20 | (CRW) | STORM RIFLE JET | (PLU21703677) |
| 3 | (SFW) | SURE FLOW | (PLU21703626) |
| 6 | (mfw) | MICRO FLOW | (PLU21703631) |
| 4 | (msw) | MICRO SWIRL | (PLU21703433) |
| 1 | (T) | TORNADO JET | (PLU21703629) |
| 1 | (W) | WHIRPOOL | (PLU21703609) |
| 1 | (OZ) | OZONE | |
| 4 | (A) | AIR VENTURI | |
| 2 | (D2) | 2" DIVERTER VALVE | |
| 1 | (D1) | 1" DIVERTER VALVE | |
| 1 | (L) | LIGHT | |
| 2 | (M/D) | MAIN DRAIN | |
| 2 | (F) | FILTER (100 SQ.FT.) | |
| 1 | (F/D) | FLOOR DRAIN | |
| 1 | (FWF) | FILTER WATERFALL | |

- OPTIONS**
- = STEREO SYSTEM (INCLUDES 4 SPEAKERS)
 - = ATS CONTROL
 - = ADJUSTABLE THERAPY SYSTEM LOUNGE
 - = TWIN BLASTER (2 MNW PLU21703427)
 - = VERTICAL WATERFALL (VWF) (2)
 - = LED UNDERWATER LIGHTS (5)
 - = WATERFALL W/VALVE (WV)
 - = PILLOW LED/FILTER LED
 - = 9800 CONTROLS, AUX PANEL & SOUNDS GOOD SYSTEM (US/CANADA)



| | |
|-----------------------|--|
| SPECIFICATIONS | |
| DIMENSIONS | 93" X 93" X 39-1/2" [236cm X 236cm X 100cm] |
| WATER CAP. | 450 GAL [1,703 L] |
| APP. WEIGHT | 900 LBS [408 Kg] |



TITLE
2010 SPA LINE CLASSIC SERIES C850L

| | |
|-------------------------|-----------------------------|
| DWG NO. | DWG BY S. LINARES |
| DATE 11/21/09 | REVISED |

NOTE:
 DUE TO OUR CONTINUOUS IMPROVEMENT PROGRAM, ALL MODELS AND SPECIFICATIONS ARE SUBJECT TO CHANGE WITHOUT NOTICE.