

## STANDARD FEATURES

Spa Model	C836B
Seating Capacity	6
Acrylic	Standard
Dimensions (W x L x H)	93" x 93" x 39"
Dry Weight (Lbs.)	900 (408 kg)
Filled Weight (Lbs.)	4,648 (2,108 kg)
Water Capacity (Gal.)	450 (1,703 L)
High Performance Pump	2x 5.0 HP
Pump(s) Voltage	240V
True Blue Vacuum Safety Break	Yes
Exclusive Safety Suction System™	Yes
<b>Total Stainless Steel Jets:</b>	<b>36</b>
Micro Swirl (msw)	6
Neck Blasters (MFRW)	3
Neck Jets (MNW)	4
Ozone Jet (OZ)	1
Polystorm Accupressure - 6 spoke (PSA)	4
Storm (CXW)	12
Storm (MJW)	2
Sure Flow (SFW)	2
Tornado (T)	1
Whirlpool (W)	1
Exclusive Cal Quest 2000 Ozonator™	Yes
Waterfall, Vertical (OPT-331)	2
Pillows	5
2" Plumbing	Yes
Easy-Flo Air Venturi Valve	2
Gate Valve(s)	Yes
Comfort Diverter 1" Valve	2
Comfort Diverter 2" Valve	1
Exclusive Bio-Clean Filter™ Feeder with Weir Gate	75 sq. ft.
Spa Light (12V)	Yes
Exclusive Automatic Winterizing System	Yes
Exclusive "Green Pack" 40/50 Amp Equipment (Only Available with 2 pump system) (N/A with XL Option in Classic Series )	Yes
<b>Equipment &amp; Electrical</b>	<b>6200 Equipment with Mini Dash</b>
Exclusive XL Heat Exchanger™ (5.5Kw)	Yes
Floor Drain	Yes
Wall Drain	Yes
Pressure Treated Cabinet Frame	Yes
Cal Preferred Cabinet Panel	Cal Design
Cover, Standard 5" Taper to 3"	Yes
Standard Bottom Tray	Yes
UL , CEC and VGB Approved	Yes
Warranty (Structural)	5 Years
Warranty (Finish)	5 Years
Warranty (Parts)	5 Years
Warranty (Labor)	5 Years

## AVAILABLE OPTIONS

SHELL	
Cover, Deluxe 5" Taper to 3"	Opt-133
Extended Adjustable Cover Straps (up to 39 1/2" Cabinet)	ACC01800700
CABINET	
ABS Bottom Tray (Adds approx. 2-3" in height)( 7' or 8' only)	OPT-247
Top Rail (N/A on Cal Wicker & Cal Choice Cabinets ; Adds approx 3" in width)	OPT-991
Full Foam Insulation	Opt-600
Thermo-Layer Cabinet	Opt-829
2 Corner Side Cabinet Lighting (Cal Preferred cabinets only)	Opt-863-2
4 Corner Side Cabinet Lighting (Cal Preferred cabinets only)	Opt-863-4
2 Corner Under Cabinet Lighting (Cal Preferred cabinets only)	Opt-864-2
4 Corner Under Cabinet Lighting (Cal Preferred cabinets only)	Opt-864-4
2 Corner Illumipanel Cabinet Lighting (Cal Preferred cabinets only)	Opt-866-2
4 Corner Illumipanel Cabinet Lighting (Cal Preferred cabinets only)	Opt-866-4
Cal Choice Cabinet Panels (N/A with Top rail)	OPT-972
Cal Stone Cabinet (Gold / Platinum)	Opt-955
Cal Wicker Cabinet (Smoke) (N/A with Top rail)	Opt-971



## AVAILABLE OPTIONS

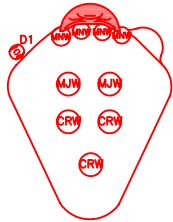
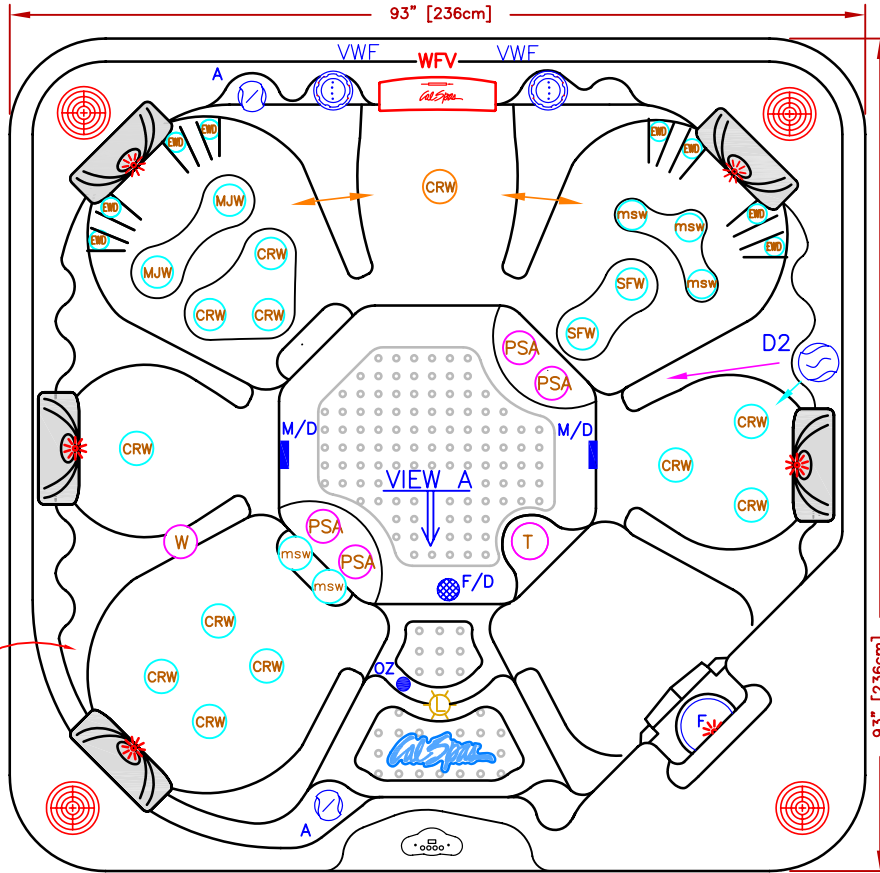
PLUMBING	
Stainless Steel Cobalt Blue Jets	OPT417-BLU-2
Waterfall, Cascade (WFV)	Opt-329
Cabinet Accessible Drain Valve	Opt-129
Quad Blaster (4 Jets with Valve)	OPT344
Neck Blasters (3 Jets with Valve)	OPT341
Neck Jets (2 Jets)	Opt-119
Turbo Air Injection (Adds 10 Air Jets)	Opt-800A
Supercharged Jets (will eliminate air valves )	Opt-800
Supercharged Jets / Turbo Air (Adds 10 Air Jets) (will eliminate air valves )	Opt-800C
EQUIPMENT	
Exclusive Pure XL™ System (XI Heater, Spa Cal Filtration, UV Light)	OPT-190-1
Exclusive Cal-Clarity™ Bromine Generator	Opt-911
Exclusive 24 Hr + Filtration™	OPT-112
Exclusive Spa Cal Filtration™	OPT-110
Exclusive Booster Pumps 2 x 6 HP	Opt-139
Exclusive Adjustable Therapy System (Therapy Seat) (S1)	Opt-109T
Spa LED light	Opt-860
LED Perimeter / Waterline Lighting	Opt-860P
LED Underwater Lighting	Opt-865
Stereo System iPod Station Only with Four (4) 6" Speakers	Opt-S101
Stereo System CD player, MP3 with Four (4) 6" Speakers	Opt-S105
Marine Stereo System CD player, MP3 with Four (4) 6" Speakers	Opt-S115
Freestanding 32" Outdoor LCD TV with Swivel & Remote	ELE09306000
"iSound" Remote iPod Dock with Portable Speaker	ELE09307000
Subwoofer (N/A on 2 speakers system)	Opt-196
Wireless Spa Monitor (Requires XL Option)	ELE09300600
Dolphin Waterproof Floating RF Remote Control (Requires XL Option)	ELE09300800
RECOMMENDED ACCESSORIES	
Rock-It Cover Lift (Undermount)	ACC01601020
Comfort Steps Mist(Mi), Smoke(S) or Mahogany(M)	ACCOHS2( )
Cantilever Umbrella with Cross Base Rust(R), Navy(N) or Cream( )	ACC01800600( )
Cantilever Umbrella with Flat Base Rust(R), Navy(N) or Cream( )	ACC01800610( )
Starter Chemical Kit ( Bromine or Chlorine)	CHE07000290-B CHE07000295-C

## XL OPTION

### C836B-XL

- 1 Water Fall
- Two (2) 1" Comfort Diverter Valve with LED
- One (1) 2" Comfort Diverter Valve with LED
- 2 Easy-Flo Air Venturi with LED
- 3 Pillows with LED Logo
- 9800 Equipment with with Sound
- LED Lighting Opt-860P

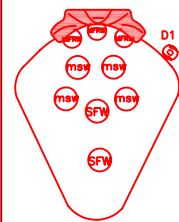
LINE	CLASSIC
MODEL	C836B
NUM	



QUAD BLASTER OPTION  
 QUAD BLASTER OPT. REPLACE  
 STD. SEAT CONFIGURATION

ADD

- (MJW) = STORM JET (2)
- (CRW) = STORM RIFLE JET (3)
- (M/W) = QUAD BLASTER JETS (4)
- (D) = 1" DIVERTER VALVE (1)



NECK BLASTER OPTION  
 NECK BLASTER OPT. REPLACE  
 STD. SEAT CONFIGURATION

ADD

- (MSW) = MICRO SWIRL JET (4)
- (M/W) = NECK BLASTER JETS (3)
- (SFW) = SURE FLOW JETS (2)
- (D) = 1" DIVERTER VALVE (1)

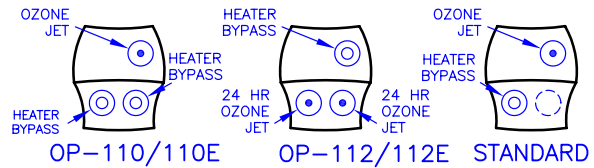
### 36 JETS LEGEND

QTY.	SYMB.		
2	(MJW)	STORM JET	(PLU21703625)
12	(CRW)	STORM RIFLE JET	(PLU21703677)
2	(SFW)	SURE FLOW	(PLU21703626)
5	(msw)	MICRO SWIRL	(PLU21703632)
4	(PSA)	POWER STRM ACPR	(PLU21703668)
8	(EWD)	NECK EURO JET	(PLU21703643)
1	(T)	TORNADO JET	(PLU21703629)
1	(W)	WHIRPOOL	(PLU21703609)
1	(OZ)	OZONE	
2	(VWF)	VERTICAL WATER FALL	
2	(A)	AIR VENTURI	
1	(D2)	2" DIVERTER VALVE	
1	(L)	LIGHT	
2	(M/D)	MAIN DRAIN	
1	(F)	FILTER (75 SQ.FT.)	
1	(F/D)	FLOOR DRAIN	

### OPTIONS

- = STEREO SYSTEM (INCLUDES 4 SPEAKERS)
- = ATS CONTROL
- = TWIN BLASTER (2 M/W PLU21703427)
- = WATERFALL W/VALVE (VWF)
- = PILLOW LED/FILTER LED
- = 9800 CONTROLS & SOUNDS GOOD SYSTEM (US/CANADA)

### US/INTERNATIONAL



VIEW A

SCALE: N/A

SPECIFICATIONS	
DIMENSIONS	93" X 93" X 39-1/2" [236cm X 236cm X 100cm]
WATER CAP.	450 GAL [1,703 L]
APP. WEIGHT	900 LBS [408 Kg]



TITLE  
 2010 SPA LINE  
 CLASSIC SERIES  
 C836B

DWG NO. \_\_\_\_\_ DWG BY  
 S. LINARES

DATE 11/21/09 REVISED

NOTE:  
 DUE TO OUR CONTINUOUS IMPROVEMENT PROGRAM, ALL MODELS  
 AND SPECIFICATIONS ARE SUBJECT TO CHANGE WITHOUT NOTICE.