

## STANDARD FEATURES

| Spa Model   | C765L                         |
|---|-------------------------------|
| Seating Capacity                                  | 6                             |
| Acrylic   | Standard                      |
| Dimensions (W x L x H)                            | 84" x 84" x 39"               |
| Dry Weight (Lbs.)                                 | 850 (386 kg)                  |
| Filled Weight (Lbs.)                              | 4,390 (1,991 kg)              |
| Water Capacity (Gal.)                             | 425 (1,609 L)                 |
| High Performance Pump                             | 3 x 5.0 HP                    |
| Pump(s) Voltage                                   | 240V                          |
| True Blue Vacuum Safety Break                     | Yes                           |
| Exclusive Safety Suction System™                  | Yes                           |
| <b>Total Stainless Steel Jets:</b>                | <b>65</b>                     |
| Euro Jets (EW)                                    | 4                             |
| Micro Flow Jets (mfw)                             | 28                            |
| Neck Blasters (MFRW)                              | 3                             |
| Neck Jets (MNV)                                   | 4                             |
| Ozone Jet (OZ)                                    | 1                             |
| Storm (CXLW)                                      | 3                             |
| Storm (CXW)                                       | 12                            |
| Sure Flow (SFW)                                   | 8                             |
| Tornado (T)                                       | 1                             |
| Whirlpool (W)                                     | 1                             |
| Exclusive Cal Quest 2000 Ozonator™                | Yes                           |
| Waterfall, Filter (OPT-334)                       | Yes                           |
| Pillows   | 5                             |
| 2" Plumbing                                       | Yes                           |
| Easy-Flo Air Venturi Valve                        | 4                             |
| Gate Valve(s)                                     | Yes                           |
| Comfort Diverter 1" Valve                         | 3                             |
| Comfort Diverter 2" Valve                         | 2                             |
| Exclusive Bio-Clean Filter™ Feeder with Weir Gate | 150 sq. ft.                   |
| Spa Light (12V)                                   | Yes                           |
| Exclusive Automatic Winterizing System            | Yes                           |
| Equipment & Electrical                            | 6300 Equipment with Mini Dash |
| Exclusive XL Heat Exchanger™ (5.5Kw)              | Yes                           |
| Floor Drain                                       | Yes                           |
| Wall Drain  | Yes                           |
| Pressure Treated Cabinet Frame                    | Yes                           |
| Cal Preferred Cabinet Panel                       | Cal Design                    |
| Cover, Standard 5" Taper to 3"                    | Yes                           |
| Standard Bottom Tray                              | Yes                           |
| UL , CEC and VGB Approved                         | Yes                           |
| Warranty (Structural)                             | 5 Years                       |
| Warranty (Finish)                                 | 5 Years                       |
| Warranty (Parts)                                  | 5 Years                       |
| Warranty (Labor)                                  | 5 Years                       |

## AVAILABLE OPTIONS

| SHELL  |              |
|--|--------------|
| Cover, Deluxe 5" Taper to 3"   | Opt-133      |
| CABINET  |              |
| ABS Bottom Tray (Adds approx. 2-3" in height)( 7' or 8' only)                | OPT-247      |
| Top Rail (N/A on Cal Wicker & Cal Choice Cabinets ; Adds approx 3" in width) | OPT-991      |
| Full Foam Insulation   | Opt-600      |
| Thermo-Layer Cabinet   | Opt-829      |
| 2 Corner Side Cabinet Lighting (Cal Preferred cabinets only)                 | Opt-863-2    |
| 4 Corner Side Cabinet Lighting (Cal Preferred cabinets only)                 | Opt-863-4    |
| 2 Corner Under Cabinet Lighting (Cal Preferred cabinets only)                | Opt-864-2    |
| 4 Corner Under Cabinet Lighting (Cal Preferred cabinets only)                | Opt-864-4    |
| 2 Corner Illumipanel Cabinet Lighting (Cal Preferred cabinets only)          | Opt-866-2    |
| 4 Corner Illumipanel Cabinet Lighting (Cal Preferred cabinets only)          | Opt-866-4    |
| Cal Choice Cabinet Panels (N/A with Top rail)                                | OPT-972      |
| PLUMBING   |              |
| Stainless Steel Cobalt Blue Jets   | OPT417-BLU-2 |
| Waterfall, Cascade (WVF)   | Opt-329      |
| Waterfall, Vertical (VVF)  | Opt-331      |
| Waterfall, Vertical (VVF) (x2)   | Opt-331-2    |
| Cabinet Accessible Drain Valve   | Opt-129      |
| Quad Blaster (4 Jets with Valve)   | OPT344       |



## AVAILABLE OPTIONS

| PLUMBING (continued)  |                                |
|---|--------------------------------|
| Neck Blasters (3 Jets with Valve)   | OPT341                         |
| Neck Jets (2 Jets)  | Opt-119                        |
| Turbo Air Injection (Adds 10 Air Jets)  | Opt-800A                       |
| Supercharged Jets (will eliminate air valves )                                | Opt-800                        |
| Supercharged Jets / Turbo Air (Adds 10 Air Jets) (will eliminate air valves ) | Opt-800C                       |
| EQUIPMENT   |                                |
| Exclusive Pure XL™ System (XI Heater, Spa Cal Filtration, UV Light)           | OPT-190-1                      |
| Exclusive Cal-Clarity™ Bromine Generator                                      | Opt-911                        |
| Exclusive 24 Hr + Filtration™   | OPT-112                        |
| Exclusive Spa Cal Filtration™   | OPT-110                        |
| Exclusive Adjustable Therapy System (Therapy Seat) (S1)                       | Opt-109T                       |
| Exclusive Adjustable Therapy System (Therapy Lounge) (S2)                     | Opt-109L                       |
| Spa LED light   | Opt-860                        |
| LED Perimeter / Waterline Lighting  | Opt-860P                       |
| LED Underwater Lighting   | Opt-865                        |
| Stereo System iPod Station Only with Four (4) 6" Speakers                     | Opt-S101                       |
| Stereo System CD player, MP3 with Four (4) 6" Speakers                        | Opt-S105                       |
| Marine Stereo System CD player, MP3 with Four (4) 6" Speakers                 | Opt-S115                       |
| Freestanding 32" Outdoor LCD TV with Swivel & Remote                          | ELE09306000                    |
| "iSound" Remote iPod Dock with Portable Speaker                               | ELE09307000                    |
| Subwoofer (N/A on 2 speakers system)  | Opt-196                        |
| Wireless Spa Monitor (Requires XL Option)                                     | ELE09300600                    |
| Dolphin Waterproof Floating RF Remote Control (Requires XL Option)            | ELE09300800                    |
| RECOMMENDED ACCESSORIES   |                                |
| Rock-It Cover Lift (Undermount)   | ACC01601020                    |
| Comfort Steps Mist(Mi), Smoke(S) or Mahogany(M)                               | ACCOHS2( )                     |
| Cantilever Umbrella with Cross Base Rust(R), Navy(N) or Cream( )              | ACC01800600( )                 |
| Cantilever Umbrella with Flat Base Rust(R), Navy(N) or Cream( )               | ACC01800610( )                 |
| Starter Chemical Kit ( Bromine or Chlorine)                                   | CHE07000290-B<br>CHE07000295-C |

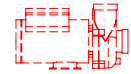
## XL OPTION

### C765L-XL

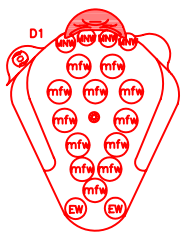
- 1 Water Fall
- Two (2) 1" Comfort Diverter Valve with LED
- Two (2) 2" Comfort Diverter Valve with LED
- 4 Easy-Flo Air Venturi with LED
- 3 Pillows with LED Logo
- 9800 Equipment with with AUX panel and Sound
- LED Lighting Opt-860P

|       |         |
|-------|---------|
| LINE  | CLASSIC |
| MODEL | C765L   |
| NUM   |         |

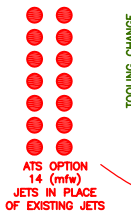
PUMP#3



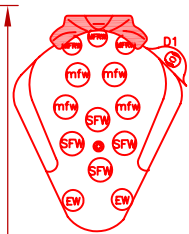
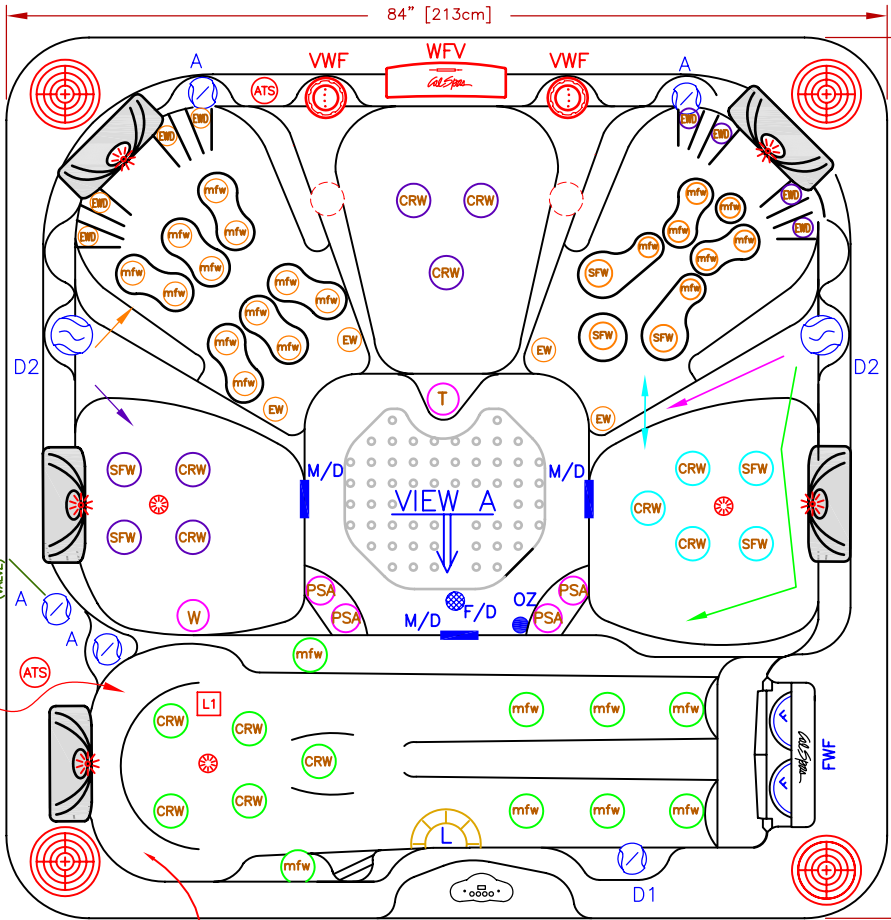
IF CIRCULATION PUMP IS ADDED, PUMP#1&2 MOVES TO THE SIDE OF THE SPA AND PUMP#3 TO THE BACK.



- QUAD BLASTER OPTION**  
 QUAD BLASTER OPT. REPLACE STD. SEAT CONFIGURATION
- ADD
- (mfw) = MICRO FLOW JET (12)
  - (EW) = EURO JET (2)
  - (MNV) = QUAD BLASTER JETS (4)
  - (\*) = LED UNDERWATER LIGHTS (1)
  - (D) = 1" DIVERTER VALVE (1)



- ATS OPTION**  
 14 (mfw) JETS IN PLACE OF EXISTING JETS



- NECK BLASTER OPTION**  
 NECK BLASTER OPT. REPLACE STD. SEAT CONFIGURATION AND DECREASE JET COUNT TO 64
- ADD
- (mfw) = MICRO FLOW JET (4)
  - (MNV) = NECK BLASTER JETS (3)
  - (EW) = EURO JET (2)
  - (SFW) = SURE FLOW JETS (4)
  - (CRW) = STORM RIFLE JET (2)
  - (\*) = LED UNDERWATER LIGHTS (1)
  - (D) = 1" DIVERTER VALVE (1)

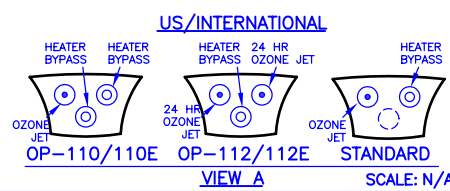
**65 JETS LEGEND**

| QTY. | SYMB. | DESCRIPTION                   |
|------|-------|-------------------------------|
| 13   | (CRW) | STORM RIFLE JET (PLU21703677) |
| 7    | (SFW) | SURE FLOW (PLU21703626)       |
| 27   | (mfw) | MICRO FLOW (PLU21703631)      |
| 8    | (EWD) | NECK EURO JET (PLU21703643)   |
| 4    | (EW)  | EURO JET (PLU21703621)        |
| 1    | (W)   | WHIRPOOL (PLU21703609)        |
| 1    | (T)   | TORNADO (PLU21703629)         |
| 4    | (PSA) | POWER STRM ACPR (PLU21703668) |
| 4    | (A)   | AIR VENTURI                   |
| 2    | (D2)  | 2" DIVERTER VALVE             |
| 1    | (D1)  | 1" DIVERTER VALVE             |
| 1    | (L)   | LIGHT                         |
| 3    | (M/D) | MAIN DRAIN                    |
| 2    | (F)   | FILTER (150 SQ.FT.)           |
| 1    | (F/D) | FLOOR DRAIN                   |
| 1    | (FWF) | FILTER WATERFALL              |
| 1    | (OZ)  | OZONE                         |



- OPTIONS**
- (\*) = STEREO SYSTEM (INCLUDES 4 SPEAKERS)
  - (ATS) = ATS CONTROL
  - (L1) = ADJUSTABLE THERAPY SYSTEM LOUNGE
  - (V) = VERTICAL WATERFALL (2 WVF)
  - (\*) = LED UNDERWATER LIGHTS (4)

- (TWIN BLASTER) = TWIN BLASTER (2 MNV PLU21703427)
- (WVF) = WATERFALL W/VALVE (WVF)
- (\*) = PILLLOW LED/FILTER LED
- (\*) = SOUNDS GOOD SYSTEM (US/CANADA)
- (\*) = 9800 CONTROLS, AUX PANEL



|                |   |
|----------------|---|
| SPECIFICATIONS |   |
| DIMENSIONS     | 84" x 84" x 39-1/2" [213cmX213cmX100cm] |
| WATER CAP.     | 425 GAL [1,609 L]                       |
| APP. WEIGHT    | 850 LBS [386 Kg]                        |



|                                    |                   |
|------------------------------------|-------------------|
| TITLE                              |                   |
| 2010 SPA LINE CLASSIC SERIES C765L |                   |
| DWG NO.                            | DWG BY S. LINARES |
| DATE                               | REVISD            |
| 11/24/09                           |                   |

NOTE: DUE TO OUR CONTINUOUS IMPROVEMENT PROGRAM, ALL MODELS AND SPECIFICATIONS ARE SUBJECT TO CHANGE WITHOUT NOTICE.