

STANDARD FEATURES

SPA MODEL	E748L
Seating Capacity	6
Acrylic	Basic
Dimensions (W x L x H)	84" x 84" x 39"
Dry Weight (Lbs.)	800 (363 kg)
Filled Weight (Lbs.)	4,340 (1,969 kg)
Water Capacity (Gal.)	425 (1,609 L)
High Performance Pump	2 x 2.0 HP
Pump(s) Voltage	240V
True Blue Vacuum Safety Break	Yes
Total Stainless Steel Jets:	48
Euro Directional - 6 spoke (ED)	4
Euro Less Eyeball (ELE)	12
Micro Flow Directional - 6 spoke (mfc)	24
Ozone Jet (OZ)	1
Power Storm Riffle - 6 spoke (PSR)	4
Power Storm Twister - 6 spoke (PST)	4
Ozonator (102C)	Yes
Waterfall, Cascade (OPT-329)	Yes
Pillows (Bump)	2
2" Plumbing	Yes
Comfort Diverter 2" Valve	1
Exclusive Bio Clean Filter™ Pop Up Filter Basket	50 sq. ft.
Spa Light (12V)	Yes
Exclusive Automatic Winterizing System	Yes
Exclusive "Green Pack" 40/50 Amp Equipment <small>(Only Available with 2 pump system) (N/A with XL Option in Classic Series)</small>	Yes
Equipment & Electrical	5100 Equipment with Oval Topside
Flow-Through Heater (5.5kw)	Yes
Wall Drain	Yes
Pressure Treated Cabinet Frame	Yes
Cal Choice Cabinet Panels	Yes
Cover, Basic 4" Taper to 2.5"	Yes
Standard Bottom Tray	Yes
UL , CEC and VGB Approved	Yes
Warranty (Structural)	3 Years
Warranty (Finish)	3 Years
Warranty (Parts)	3 Years
Warranty (Labor)	3 Years

AVAILABLE OPTIONS

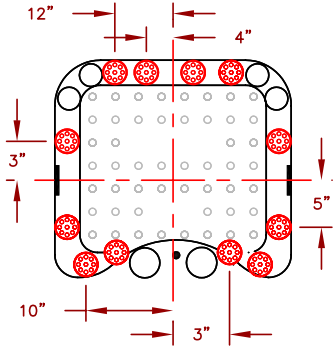
SHELL	
Standard Colors	Opt-211
Cover, Standard 5" Taper to 3"	Opt-136
Cover, Deluxe 5" Taper to 3"	Opt-133
CABINET	
ABS Bottom Tray (Adds approx. 2-3" in height)(7' or 8' only)	OPT-247
Top Rail (N/A on Cal Wicker & Cal Choice Cabinets ; Adds approx 3" in width)	OPT-991
Full Foam Insulation	Opt-600
Thermo-Layer Cabinet	Opt-829
2 Corner Side Cabinet Lighting (Cal Preferred cabinets only)	Opt-863-2
4 Corner Side Cabinet Lighting (Cal Preferred cabinets only)	Opt-863-4
2 Corner Under Cabinet Lighting (Cal Preferred cabinets only)	Opt-864-2



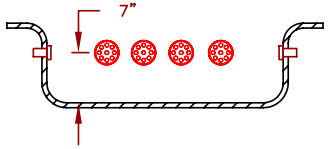
AVAILABLE OPTIONS

CABINET	
4 Corner Under Cabinet Lighting (Cal Preferred cabinets only)	Opt-864-4
2 Corner Illuminpanel Cabinet Lighting (Cal Preferred cabinets only)	Opt-866-2
4 Corner Illuminpanel Cabinet Lighting (Cal Preferred cabinets only)	Opt-866-4
Cal Preferred Cabinet Panel	OPT-989
Cal Design Cabinet Panel (N/A with Top rail)	Opt-977-D
PLUMBING	
Stainless Steel Cobalt Blue Jets	OPT417-BLU-2
Waterfall, Vertical (VWF)	Opt-331
Cabinet Accessible Drain Valve	Opt-129
Gate Valve(s)	Opt-400
Turbo Air Injection (Adds 10 Air Jets)	Opt-800F2
EQUIPMENT	
Exclusive Pure XL™ System (6200 Equip. Pack, XI Heater, Spa Cal Filtration, UV Light)	OPT-190-2
Exclusive Cal-Clarity™ Bromine Generator	Opt-911
Exclusive 24 Hr + Filtration™	OPT-112
Exclusive Spa Cal Filtration™	OPT-110
Exclusive Booster Pump 1 x Dually 6HP	OPT-139F
Exclusive Booster Pumps 2 x 6 HP	OPT-139A
Spa LED light	Opt-860
LED Perimeter / Waterline Lighting	Opt-860P
Stereo System iPod Station Only with Two (2) 4" Speakers	Opt-S107
Stereo System CD player, MP3 with Two (2) 4" Speakers	Opt-S106
Marine Stereo System CD player, MP3 with Two (2) 4" Speakers	Opt-S110
Freestanding 32" Outdoor LCD TV with Swivel & Remote	ELE09306000
"iSound" Remote iPod Dock with Portable Speaker	ELE09307000
RECOMMENDED ACCESSORIES	
Rock-It Cover Lift (Undermount)	ACC01601020
Comfort Steps Mist(Mi), Smoke(S) or Mahogany(M)	ACCOHS2()
Cantilever Umbrella with Cross Base Rust(R), Navy(N) or Cream()	ACC01800600()
Cantilever Umbrella with Flat Base Rust(R), Navy(N) or Cream()	ACC01800610()
Starter Chemical Kit (Bromine or Chlorine)	CHE07000290-B CHE07000295-C

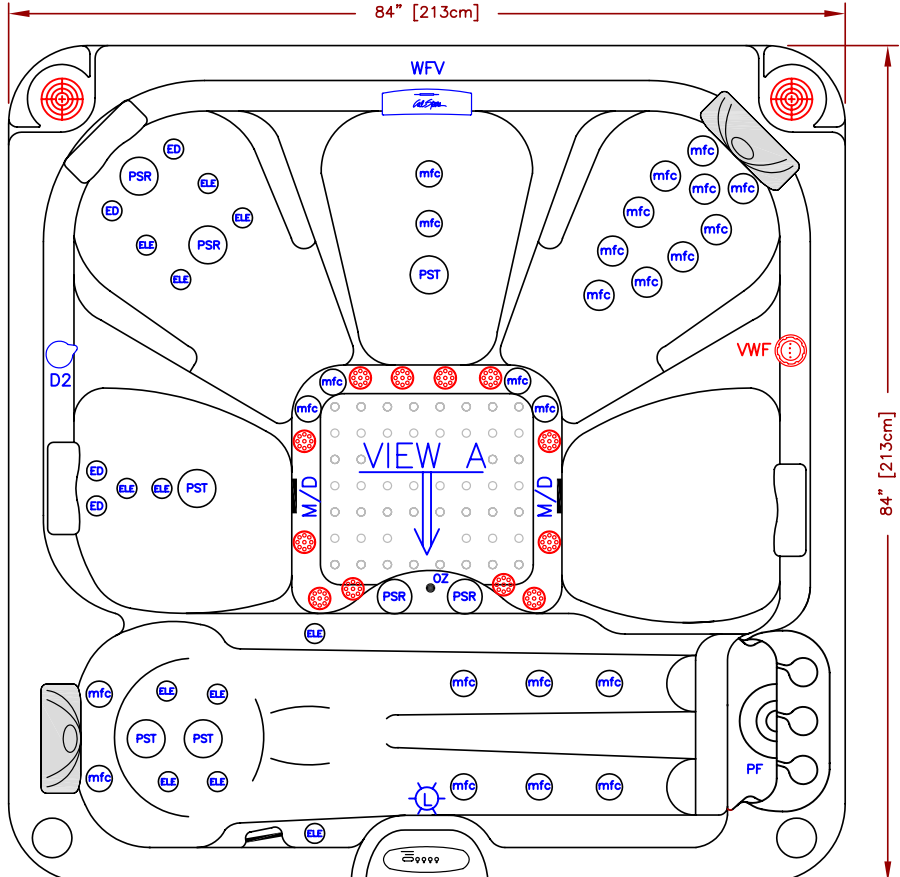
LINE	ESCAPE
MODEL	E748L
NUM	



AIR INJECTORS LOCATION



SPA PROFILE

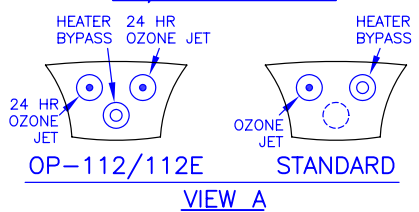


VIEW A

OPTION

- = STEREO SYSTEM (INCLUDES 2 SPEAKERS)
- = VERTICAL WATERFALL
- = AIR INJECTORS

US/INTERNATIONAL



48 JETS LEGEND

QTY.	SYMB.	DESCRIPTION
4	(PSR)	POWER STORM RIFFLE - 6 SPOKE (PLU21703666)
4	(PST)	POWER STORM TWISTER - 6 SPOKE (PLU21703665)
24	(mfc)	MICRO FLOW DIRECTIONAL - 6 SPOKE (PLU21703664)
4	(ED)	EURO DIRECTIONAL - 6 SPOKE (PLU21703662)
12	(ELE)	EURO LESS EYEBALL - 6 SPOKE (PLU21703663)
1	(OZ)	OZONE
1	(WV)	WATERFALL W/VALVE
1	(D2)	2" DIVERTER VALVE
1	(L)	LIGHT
2	(M/D)	MAIN DRAIN
1	(PF)	POP-UP FILTER (50 SQ.FT.)

NOTE: DUE TO OUR CONTINUOUS IMPROVEMENT PROGRAM, ALL MODELS AND SPECIFICATIONS ARE SUBJECT TO CHANGE WITHOUT NOTICE.

SPECIFICATIONS	
DIMENSIONS	84" x 84" x 39 1/2" [213cmX213cmX100cm]
WATER CAP.	425 GAL [1,609 L]
APP. WEIGHT	800 LBS [363 Kg]



SCALE: N/A

TITLE	
2010 SPA LINE ESCAPE SERIES E748L	
DWG NO.	DWG BY A. MORATAYA
DATE	REVISED
11/18/09	