

STANDARD FEATURES

| SPA MODEL | E864L |
|---|---|
| Seating Capacity | 6 |
| Acrylic | Basic |
| Dimensions (W x L x H) | 93" x 93" x 39" |
| Dry Weight (Lbs.) | 900 (408 kg) |
| Filled Weight (Lbs.) | 4,340 (1,969 kg) |
| Water Capacity (Gal.) | 450 (1,703 L) |
| High Performance Pump | 2 x 6.0 HP |
| Pump(s) Voltage | 240V |
| True Blue Vacuum Safety Break | Yes |
| Total Stainless Steel Jets: | 64 |
| Euro Directional - 6 spoke (ED) | 2 |
| Euro Less Eyeball (ELE) | 22 |
| Micro Flow Directional - 6 spoke (mfc) | 29 |
| Neck Jets (MNW) | 2 |
| Ozone Jet (OZ) | 1 |
| Power Storm Riffle - 6 spoke (PSR) | 3 |
| Power Storm Twister - 6 spoke (PST) | 5 |
| Tornado (T) | 1 |
| Ozonator (102C) | Yes |
| Waterfall, Cascade (OPT-329) | Yes |
| Pillows (Bump) | 3 |
| 2" Plumbing | Yes |
| Comfort Diverter 2" Valve | 2 |
| Exclusive Bio Clean Filter™ Pop Up Filter Basket | 50 sq. ft. |
| Spa Light (12V) | Yes |
| Exclusive Automatic Winterizing System | Yes |
| Exclusive "Green Pack" 40/50 Amp Equipment (Only Available with 2 pump system) (N/A with XL Option in Classic Series) | Yes |
| Equipment & Electrical | 5100 Equipment with Oval Topside |
| Flow-Through Heater (5.5kw) | Yes |
| Wall Drain | Yes |
| Pressure Treated Cabinet Frame | Yes |
| Cal Choice Cabinet Panels | Yes |
| Cover, Basic 4" Taper to 2.5" | Yes |
| Standard Bottom Tray | Yes |
| UL, CEC and VGB Approved | Yes |
| Warranty (Structural) | 3 Years |
| Warranty (Finish) | 3 Years |
| Warranty (Parts) | 3 Years |
| Warranty (Labor) | 3 Years |

AVAILABLE OPTIONS

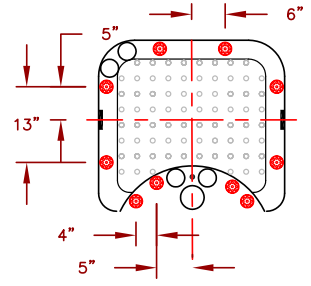
| SHELL | |
|--|-------------|
| Standard Colors | Opt-211 |
| Cover, Standard 5" Taper to 3" | Opt-136 |
| Cover, Deluxe 5" Taper to 3" | Opt-133 |
| Extended Adjustable Cover Straps (up to 39 1/2" Cabinet) | ACC01800700 |
| CABINET | |
| ABS Bottom Tray (Adds approx. 2-3" in height) (7' or 8' only) | OPT-247 |
| Top Rail (N/A on Cal Wicker & Cal Choice Cabinets ; Adds approx 3" in width) | OPT-991 |
| Full Foam Insulation | Opt-600 |
| Thermo-Layer Cabinet | Opt-829 |
| 2 Corner Side Cabinet Lighting (Cal Preferred cabinets only) | Opt-863-2 |
| 4 Corner Side Cabinet Lighting (Cal Preferred cabinets only) | Opt-863-4 |



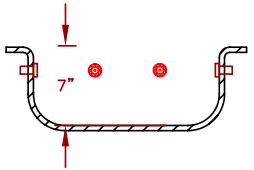
AVAILABLE OPTIONS

| CABINET (continued) | |
|--|--------------------------------|
| 2 Corner Under Cabinet Lighting (Cal Preferred cabinets only) | Opt-864-2 |
| 4 Corner Under Cabinet Lighting (Cal Preferred cabinets only) | Opt-864-4 |
| 2 Corner Illumipanel Cabinet Lighting (Cal Preferred cabinets only) | Opt-866-2 |
| 4 Corner Illumipanel Cabinet Lighting (Cal Preferred cabinets only) | Opt-866-4 |
| Cal Preferred Cabinet Panel | OPT-989 |
| Cal Design Cabinet Panel (N/A with Top rail) | Opt-977-D |
| Cal Stone Cabinet (Gold / Platinum) | Opt-955 |
| Cal Wicker Cabinet (Smoke) (N/A with Top rail) | Opt-971 |
| PLUMBING | |
| Stainless Steel Cobalt Blue Jets | OPT417-BLU-2 |
| Waterfall, Vertical (VWF) | Opt-331 |
| Cabinet Accessible Drain Valve | Opt-129 |
| Gate Valve(s) | Opt-400 |
| Turbo Air Injection (Adds 10 Air Jets) | Opt-800F2 |
| EQUIPMENT | |
| Exclusive Pure XL™ System (6200 Equip. Pack, XI Heater, Spa Cal Filtration, UV Light) | OPT-190-2 |
| Exclusive Cal-Clarity™ Bromine Generator | Opt-911 |
| Exclusive 24 Hr + Filtration™ | OPT-112 |
| Exclusive Spa Cal Filtration™ | OPT-110 |
| Spa LED light | Opt-860 |
| LED Perimeter / Waterline Lighting | Opt-860P |
| Stereo System iPod Station Only with Two (2) 4" Speakers | Opt-S107 |
| Stereo System CD player, MP3 with Two (2) 4" Speakers | Opt-S106 |
| Marine Stereo System CD player, MP3 with Two (2) 4" Speakers | Opt-S110 |
| Stereo System iPod Station Only with Four (4) 6" Speakers | Opt-S101 |
| Stereo System CD player, MP3 with Four (4) 6" Speakers | Opt-S105 |
| Marine Stereo System CD player, MP3 with Four (4) 6" Speakers | Opt-S115 |
| Freestanding 32" Outdoor LCD TV with Swivel & Remote | ELE09306000 |
| "iSound" Remote iPod Dock with Portable Speaker | ELE09307000 |
| Subwoofer (N/A on 2 speakers system) | Opt-196 |
| RECOMMENDED ACCESSORIES | |
| Rock-It Cover Lift (Undermount) | ACC01601020 |
| Comfort Steps Mist(Mi), Smoke(S) or Mahogany(M) | ACCOHS2() |
| Cantilever Umbrella with Cross Base Rust(R), Navy(N) or Cream() | ACC01800600() |
| Cantilever Umbrella with Flat Base Rust(R), Navy(N) or Cream() | ACC01800610() |
| Starter Chemical Kit (Bromine or Chlorine) | CHE07000290-B CHE07000295-C |

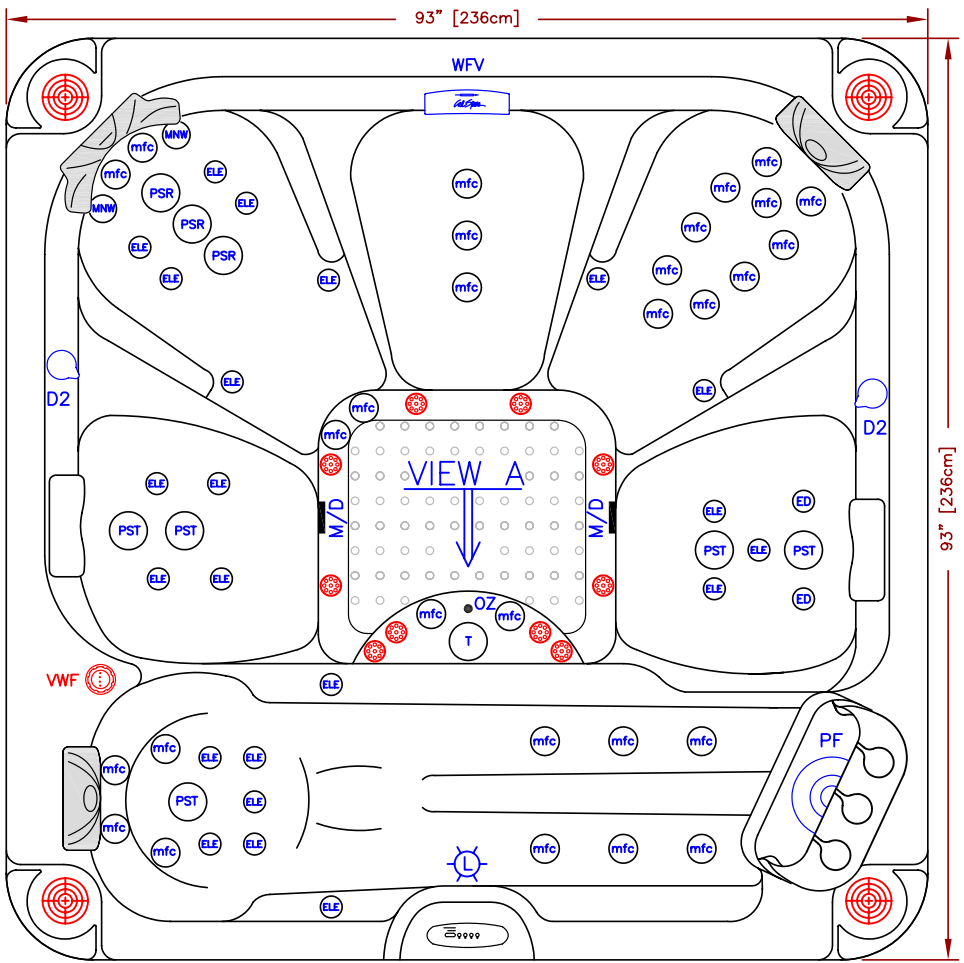
| | |
|-------|--------|
| LINE | ESCAPE |
| MODEL | E864L |
| NUM | |



AIR INJECTORS LOCATION



SPA PROFILE



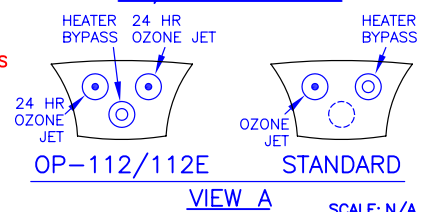
- OPTION**
- = STEREO SYSTEM (INCLUDES 2 OR 4 SPEAKERS)
 - = VERTICAL WATERFALL
 - = AIR INJECTORS

64 JETS LEGEND

| QTY. | SYMB. | DESCRIPTION |
|------|-------|--|
| 3 | (PSR) | POWER STORM RIFFLE - 6 SPOKE (PLU21703666) |
| 5 | (PST) | POWER STORM TWISTER - 6 SPOKE (PLU21703665) |
| 29 | (mfc) | MICRO FLOW DIRECTIONAL - 6 SPOKE (PLU21703664) |
| 2 | (M/W) | NECK JETS (PLU21703628) |
| 2 | (ED) | EURO DIRECTIONAL - 6 SPOKE (PLU21703662) |
| 22 | (ELE) | EURO LESS EYEBALL - 6 SPOKE (PLU21703663) |
| 1 | (T) | TORNADO JET (PLU21703629) |
| 1 | (OZ) | OZONE |
| 1 | (WFV) | WATERFALL W/VALVE |
| 2 | (D2) | 2" DIVERTER VALVE |
| 1 | (L) | LIGHT |
| 2 | (M/D) | MAIN DRAIN |
| 1 | (S/F) | POP-UP FILTER (50 SQ.FT.) |

NOTE:
DUE TO OUR CONTINUOUS IMPROVEMENT PROGRAM, ALL MODELS AND SPECIFICATIONS ARE SUBJECT TO CHANGE WITHOUT NOTICE.

US/INTERNATIONAL



| SPECIFICATIONS | |
|----------------|---|
| DIMENSIONS | 93" X 93" X 39 1/2" [236cm X 236cm X 100cm] |
| WATER CAP. | 450 GAL [1,703 L] |
| APP. WEIGHT | 900 LBS [408 Kg] |



TITLE: 2010 SPA LINE ESCAPE SERIES E864L

DWG NO. DWG BY: A. MORATAYA

DATE: 11/18/09 REVISED