

## STANDARD FEATURES

<b>Spa Model</b>	<b>Fitness 854 (F854)</b>
<b>Seating Capacity</b>	5
<b>Acrylic: Altair Plus STERLING SILVER, CARIBBEAN BLUE</b>	Yes
<b>Dimensions (W x L x H)</b>	93" x 93" x 51"
<b>Dry Weight (Lbs.)</b>	1,200 (544 kg)
<b>Filled Weight (Lbs.)</b>	12,000 (5,443 kg)
<b>Water Capacity (Gal.)</b>	650 (2,461 L)
<b>Booster Pump (Full Rated)</b>	3 x 6 BHP 240V
<b>True Blue Vacuum Safety Break</b>	Yes
<b>Total Stainless Steel Jets:</b>	54
<b>Storm (CXW)</b>	7
<b>Sure Flow (SFW)</b>	5
<b>Euro Jets (EW)</b>	32
<b>Maxi Flow Jets (MFW)</b>	4
<b>Whirlpool (W)</b>	6
<b>Vertical Waterfall</b>	1
<b>Filter Waterfall</b>	1
<b>Plumbing</b>	2" Plumbing
<b>Comfort Diverter Valves 2"</b>	2
<b>Comfort Diverter Valves 1"</b>	1
<b>Easy-Flo Air Venturi</b>	5
<b>Exclusive Bio-Clean Filter™/Wier Gate</b>	150 sq. ft.
<b>Large LED Light</b>	Yes
<b>Pillows</b>	2
<b>Fitness Anchor Ready</b>	Yes
<b>Fitness Bar Handle</b>	Yes
<b>Equipment &amp; Electrical</b>	Under the Cabinet Equipment 9800 Control Box with 5.5 Kw Heater Auxiliary panel(679) 4 Button Pk. 240 Volt Only
<b>Exclusive Automatic Winterizing System</b>	Yes
<b>Exclusive Cal Quest 2000 Ozonator™</b>	Yes
<b>Exclusive XL Heat Exchanger™</b>	5.5kW
<b>Gate Valves</b>	Yes
<b>Floor Drain</b>	Yes
<b>Drain / Intake</b>	Yes
<b>Cabinet Accessible Drain Valve (Opt-129-SKS)</b>	Yes
<b>Cabinet Panel</b>	Cal Preferred
<b>Cabinet Frame</b>	Pressure Treated
<b>Cover</b>	Deluxe
<b>Standard Bottom Tray</b>	Yes
<b>Insulation, Full Foam</b>	Yes
<b>Warranty (Structural)</b>	5 Years
<b>Warranty (Finish)</b>	5 Years
<b>Warranty (Parts)</b>	5 Years
<b>Warranty (Labor)</b>	5 Years

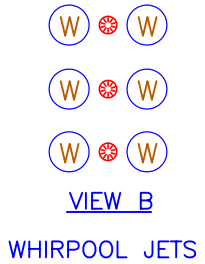
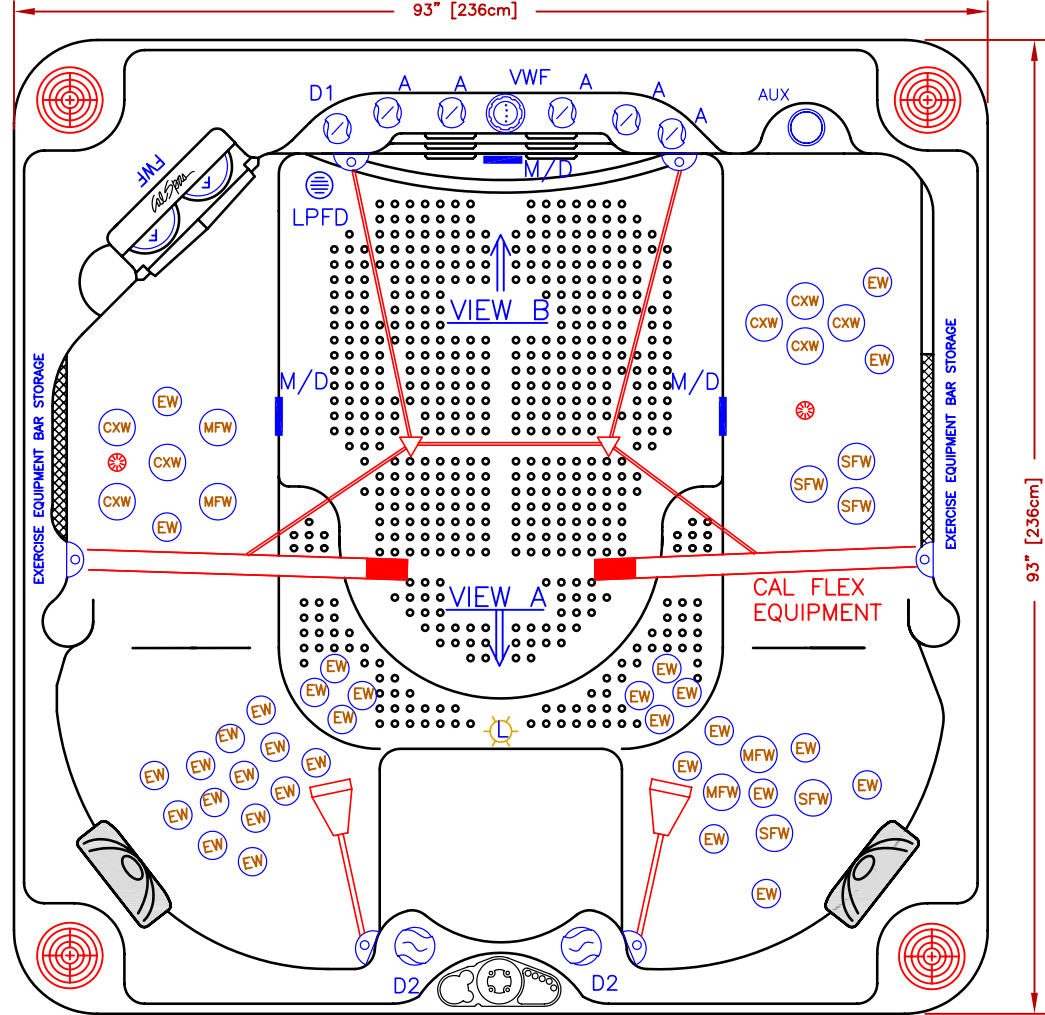


Patent Pending

## AVAILABLE OPTIONS

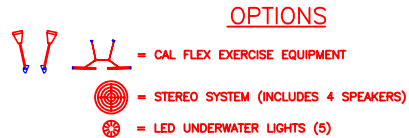
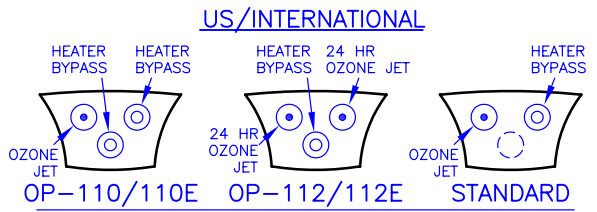
<b>SHELL</b>	
Exclusive Cal Flex™ Equipment	Opt-269
<b>CABINET</b>	
Top Rail (Adds approx 3" in width)	OPT-991-B
2 Corner Cabinet Lighting (Cal Select cabinets only)	Opt863-2
4 Corner Cabinet Lighting (Cal Select cabinets only)	Opt863-4
2 Corner Under Cabinet Lighting (Cal Preferred cabinets only)	OPT864-2
4 Corner Under Cabinet Lighting (Cal Preferred cabinets only)	OPT864-4
Thermo-Layer Cabinet	Opt829B
<b>PLUMBING</b>	
<b>EQUIPMENT</b>	
Exclusive 24 Hr + Filtration™	Opt-112
LED Waterline Lighting	Opt-860P
Under Water LED lighting	Opt-865-F
Stereo System iPod Station Only with Two (2) 4" Speakers	Opt-S107-A
Marine Stereo System CD player, MP3 with 4 Speakers	Opt-S115
Freestanding 32" Outdoor LCD TV with Swivel & Remote	ELE09306000
"iSound" Remote iPod Dock with Portable Speaker	ELE09307000
Wireless Spa Monitor (Requires 9800/9900 Equip Pack)	ELE09300600
Dolphin Waterproof Floating RF Remote Control (Requires 9800/9900 Equip Pack)	ELE09300800

LINE	FITNESS
MODEL	FITNESS F854
NUM	



54 JETS  
LEGEND

QTY	SYM	DESCRIPTION
7	(CXW)	STORM JET (PLU21703624)
5	(SFW)	SURE FLOW (PLU21703626)
32	(EW)	EURO JET (PLU21703621)
4	(MFW)	MAXI FLOW (PLU21703630)
6	(W)	WHIRLPOOL (PLU21703609)
1	(D1)	1" DIVERTER VALVE
2	(D2)	2" DIVERTER VALVE
1	(FWF)	FILTER WATER FALL
1	(VWF)	VERTICAL WATER FALL
5	(A)	AIR VENTURI
1	(L)	LIGHT (UNDER WATER LED)
3	(M/D)	MAIN DRAIN
1	(F/D)	LOW PROFILE DRAIN
2	(SF)	SKIMMER FILTER (150 SQ.FT.)



NOTE:  
DUE TO OUR CONTINUOUS IMPROVEMENT PROGRAM, ALL MODELS  
AND SPECIFICATIONS ARE SUBJECT TO CHANGE WITHOUT NOTICE.

SPECIFICATIONS	
DIMENSIONS	93" X 93" X 51" [236cmX236cmX130cm]
WATER CAP.	650 GAL [2460 L]
APP. WEIGHT	1200 LBS [544 Kg]



TITLE	
2010 SPA LINE FITNESS SERIES F854	
DWG NO.	DWG BY S. LINARES
DATE	REVISED
12/11/09	01