

VICTORY XTREME

VX861L

STANDARD FEATURES

SPA MODEL	VX861L
Seating Capacity	6
Acrylic	Basic
Dimensions (W x L x H)	93" x 93" x 39"
Dry Weight (Lbs.)	900 (408 kg)
Filled Weight (Lbs.)	4,340 (1,969 kg)
Water Capacity (Gal.)	450 (1,703 L)
High Performance Pump	2 x 6.0 BHP
Pump(s) Voltage	240V
True Blue Vacuum Safety Break	Yes
Total Stainless Steel Jets:	61
Euro Directional - 6 spoke (ED)	10
Euro Less Eyeball (ELE)	26
Micro Flow Directional - 6 spoke (mfc)	12
Ozone Jet (OZ)	1
Polystorm Directional - 6 spoke (PSD)	8
Power Storm Riffle - 6 spoke (PSR)	2
Power Storm Twister - 6 spoke (PST)	1
Tornado (T)	1
Ozonator (102C)	Yes
Pillows	3
2" Plumbing	Yes
Gate Valve(s)	Yes
Comfort Diverter 2" Valve	2
Exclusive Bio Clean Filter™ Pop Up Filter Basket	50 sq. ft.
Spa Light (12V)	Yes
Exclusive Automatic Winterizing System	Yes
Exclusive "Green Pack" 40/50 Amp Equipment (Only Available with 2 pump system) (N/A with XL Option in Classic Series)	Yes
Equipment & Electrical	5100 Equipment with Oval Topside
Flow-Through Heater (5.5kw)	Yes
Wall Drain	Yes
Pressure Treated Cabinet Frame	Yes
Cal Choice Cabinet Panels	Yes
Cover, Basic 4" Taper to 2.5"	Yes
Standard Bottom Tray	Yes
UL , CEC and VGB Approved	Yes
Warranty (Structural)	3 Years
Warranty (Finish)	3 Years
Warranty (Parts)	3 Years
Warranty (Labor)	3 Years

AVAILABLE OPTIONS

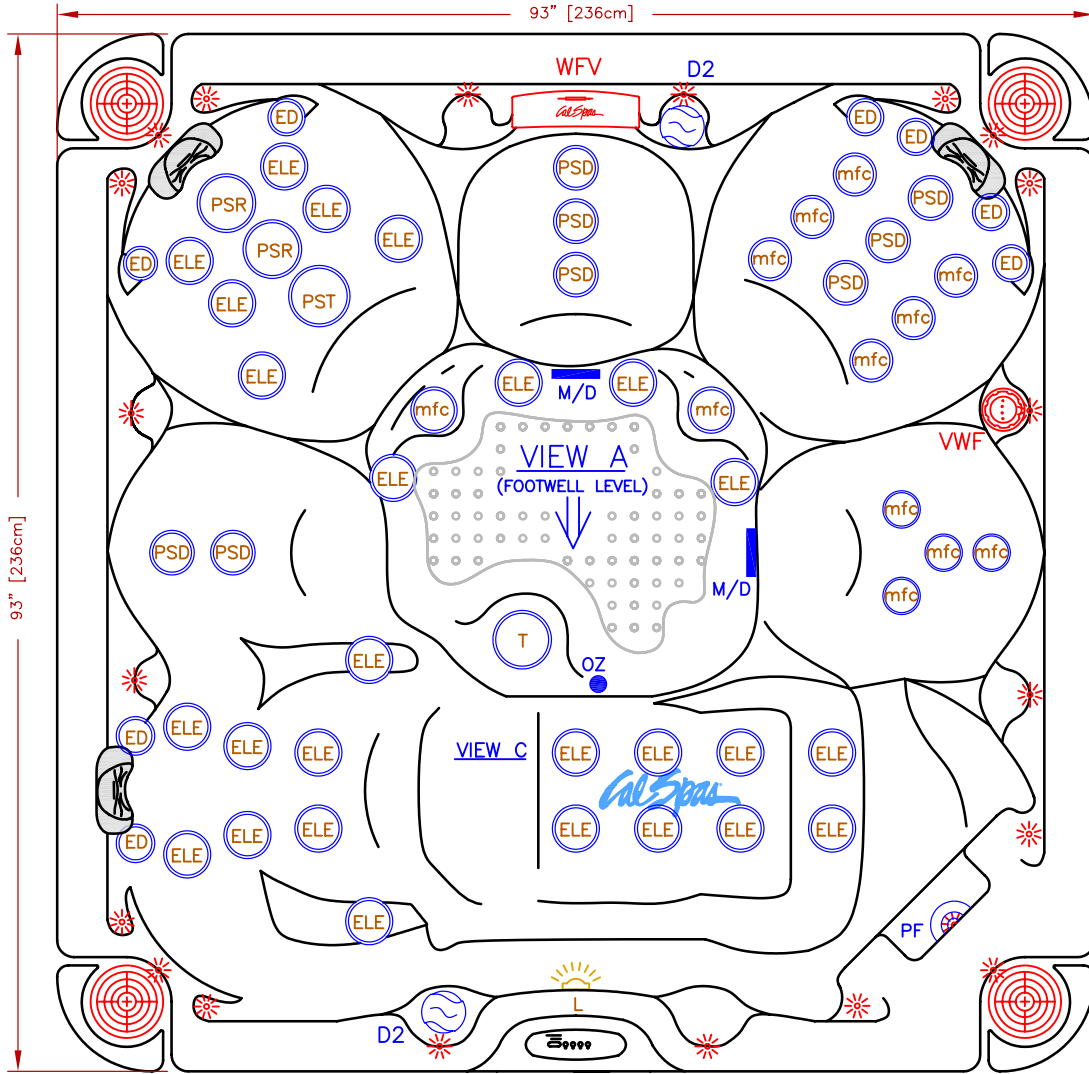
SHELL	
Standard Colors	Opt-211
Cover, Standard 5" Taper to 3"	Opt-136
Cover, Deluxe 5" Taper to 3"	Opt-133
Extended Adjustable Cover Straps (up to 39 1/2" Cabinet)	ACC01800700
CABINET	
ABS Bottom Tray (Adds approx. 2-3" in height)(7' or 8' only)	OPT-247
Top Rail (N/A on Cal Wicker & Cal Choice Cabinets ; Adds approx 3" in width)	OPT-991
Full Foam Insulation	Opt-600
Thermo-Layer Cabinet	Opt-829
2 Corner Side Cabinet Lighting (Cal Preferred cabinets only)	Opt-863-2
4 Corner Side Cabinet Lighting (Cal Preferred cabinets only)	Opt-863-4



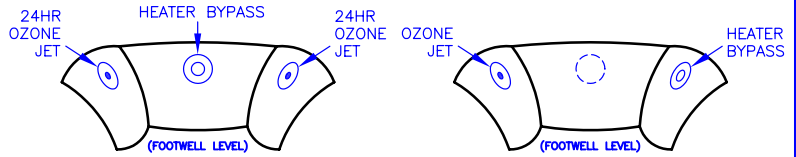
AVAILABLE OPTIONS

CABINET (continued)	
2 Corner Under Cabinet Lighting (Cal Preferred cabinets only)	Opt-864-2
4 Corner Under Cabinet Lighting (Cal Preferred cabinets only)	Opt-864-4
2 Corner Illumipanel Cabinet Lighting (Cal Preferred cabinets only)	Opt-866-2
4 Corner Illumipanel Cabinet Lighting (Cal Preferred cabinets only)	Opt-866-4
Cal Preferred Cabinet Panel	OPT-989
Cal Design Cabinet Panel (N/A with Top rail)	Opt-977-D
Cal Stone Cabinet (Gold / Platinum)	Opt-955
Cal Wicker Cabinet (Smoke) (N/A with Top rail)	Opt-971
PLUMBING	
Stainless Steel Cobalt Blue Jets	OPT417-BLU-2
Waterfall, Cascade (WVF)	Opt-329
Waterfall, Vertical (VWF)	Opt-331
Cabinet Accessible Drain Valve	Opt-129
Turbo Air Injection (Adds 10 Air Jets)	Opt-800F2
EQUIPMENT	
Exclusive Pure XL™ System (6200 Equip. Pack, XI Heater, Spa Cal Filtration, UV Light)	OPT-190-2
Exclusive Cal-Clarity™ Bromine Generator	Opt-911
Exclusive 24 Hr + Filtration™	OPT-112
Exclusive Spa Cal Filtration™	OPT-110
Spa LED light	Opt-860
LED Perimeter / Waterline Lighting	Opt-860T
Stereo System iPod Station Only with Two (2) 4" Speakers	Opt-S107
Stereo System CD player, MP3 with Two (2) 4" Speakers	Opt-S106
Marine Stereo System CD player, MP3 with Two (2) 4" Speakers	Opt-S110
Stereo System iPod Station Only with Four (4) 6" Speakers	Opt-S101
Stereo System CD player, MP3 with Four (4) 6" Speakers	Opt-S105
Marine Stereo System CD player, MP3 with Four (4) 6" Speakers	Opt-S115
Freestanding 32" Outdoor LCD TV with Swivel & Remote	ELE09306000
"iSound" Remote iPod Dock with Portable Speaker	ELE09307000
Subwoofer (N/A on 2 speakers system)	Opt-196
RECOMMENDED ACCESSORIES	
Rock-It Cover Lift (Undermount)	ACC01601020
Comfort Steps Mist(M), Smoke(S) or Mahogany(M)	ACCOHS2()
Cantilever Umbrella with Cross Base Rust(R), Navy(N) or Cream()	ACC01800600()
Cantilever Umbrella with Flat Base Rust(R), Navy(N) or Cream()	ACC01800610()
Starter Chemical Kit (Bromine or Chlorine)	CHE07000290-B CHE07000295-C

LINE	VICTORY EXTREME
MODEL	VX861L
NUM	



US/INTERNATIONAL



61 JETS LEGEND

QTY.	SYMB.	DESCRIPTION	
12	(mfc)	MICRO FLOW DIRECTIONAL- 6 SPOKE (PLU21703664)	
1	(T)	TORNADO JET (PLU21703629)	
26	(ELE)	EURO LESS EYEBALL- 6 SPOKE (PLU21703663)	
10	(ED)	EURO DIRECTIONAL- 6 SPOKE (PLU21703662)	
1	(PST)	POWER STORM TWISTER- 6 SPOKE (PLU21703665)	
2	(PSR)	POWER STORM RIFFLE- 6 SPOKE (PLU21703668)	
8	(PSD)	POLYSTORM DIRECTIONAL-6 SPOKE (PLU21703661)	
2	(D2)	2" DIVERTER VALVE	
1	(L)	LIGHT	
2	(M/D)	MAIN DRAIN	
1	(PF)	POP-UP FILTER (50 SQ.FT.)	
1	(OZ)	OZONE	

OPTIONS

- = WATERFALL W/VALVE (WFV)
 - = STEREO SYSTEM (INCLUDES 4 SPEAKERS)
 - = TOP LED CONFIGURATION
 - = VERTICAL WATERFALL (VWF)
- NOTE: AMOUNT OF LEDS INCREASES WHEN A STEREO SYSTEM IS ADDED TO A TOP LED CONFIGURATION

SPECIFICATIONS	
DIMENSIONS	93" X 93" X 39 1/2" [236cmX236cmX100cm]
WATER CAP.	450 GAL [1,703 L]
APP. WEIGHT	900 LBS [408 Kg]



TITLE
2010 SPA LINE
VICTORY EXTREME SERIES
VX861L

DWG NO.	DWG BY A. MORATAYA
DATE 11/16/09	REVISED

NOTE:
DUE TO OUR CONTINUOUS IMPROVEMENT PROGRAM, ALL MODELS
AND SPECIFICATIONS ARE SUBJECT TO CHANGE WITHOUT NOTICE.